



**3 BHK + S** - Tower : E, F, G  
 Carpet Area - 1346 Sq.ft. | Unit Area - 1917 Sq.ft.  
 Super Area - 2525 Sq.ft.



**3 BHK** - Tower : A, B, C, D, N, O, P, Q  
 Carpet Area - 1110 Sq.ft. | Unit Area - 1549 Sq.ft.  
 Super Area - 2100 Sq.ft.



Upper Terrace

**4 BHK Penthouse**  
 Tower : A, B, C, D, N, O, P, Q  
 Carpet Area - 1110 Sq.ft. | Unit Area - 1549 Sq.ft.  
 Super Area - 2100 Sq.ft.  
 +  
 Lower Terrace Super Area - 2100 Sq.ft.  
 Upper Terrace Super Area - 2100 Sq.ft.



Lower Terrace



**4 BHK + S Penthouse**  
 Tower : E, F, G  
 Carpet Area - 1346 Sq.ft. | Unit Area - 1917 Sq.ft.  
 Super Area - 2525 Sq.ft.  
 +  
 Lower Terrace Super Area - 2525 Sq.ft.  
 Upper Terrace Super Area - 2525 Sq.ft.



Lower Terrace



**4 BHK** - Tower : K, L, M  
 Carpet Area - 1741 Sq.ft. | Unit Area - 2363 Sq.ft.  
 Super Area - 3130 Sq.ft.



**5 BHK + S - Tower : H, I**  
 Carpet Area - 2233 Sq.ft. | Unit Area - 2933 Sq.ft.  
 Super Area - 3785 Sq.ft.

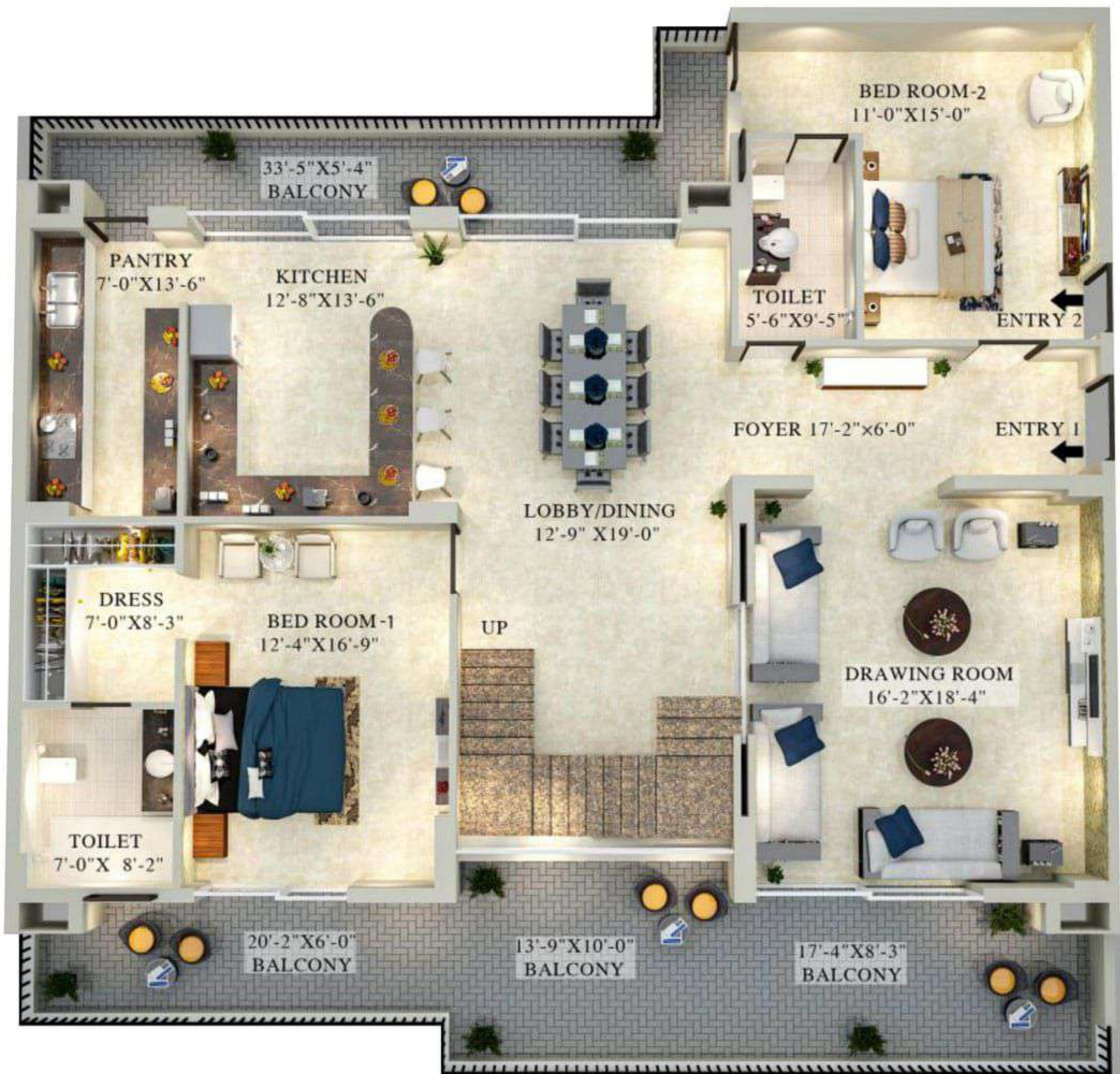


Upper Terrace

**5 BHK Penthouse**  
 Tower : K, L, M  
 Carpet Area - 1741 Sq.ft. | Unit Area - 2363 Sq.ft.  
 Super Area - 3130 Sq.ft.  
 Lower Terrace Super Area - 3130 Sq.ft.  
 Upper Terrace Super Area - 3130 Sq.ft.



Lower



**Duplex 5 BHK** - Tower : J (Lower Floor)  
 Carpet Area - 3323 Sq.ft. | Unit Area - 4559 Sq.ft.  
 Super Area - 5750 Sq.ft.

