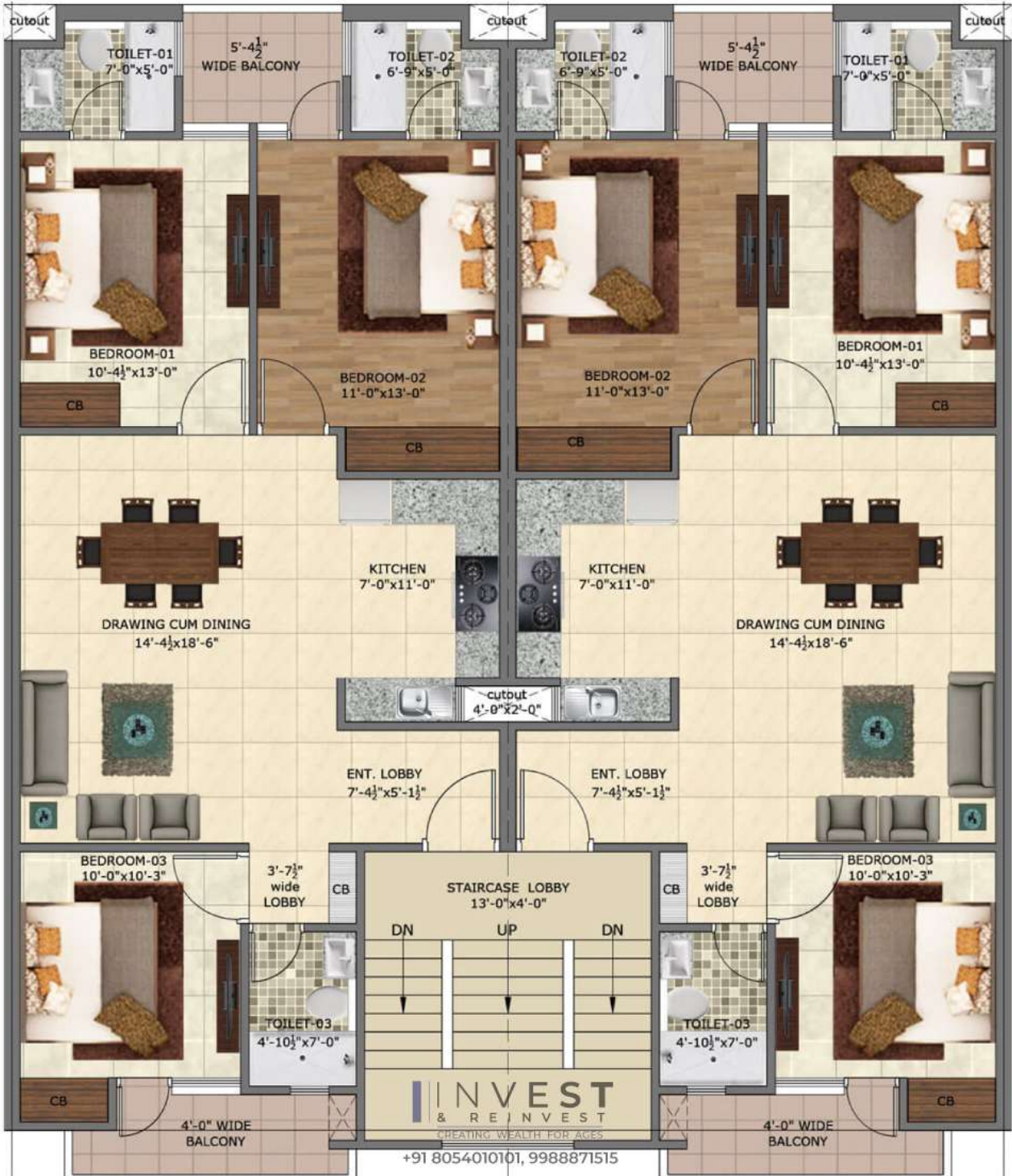


3 BHK UNIT PLAN

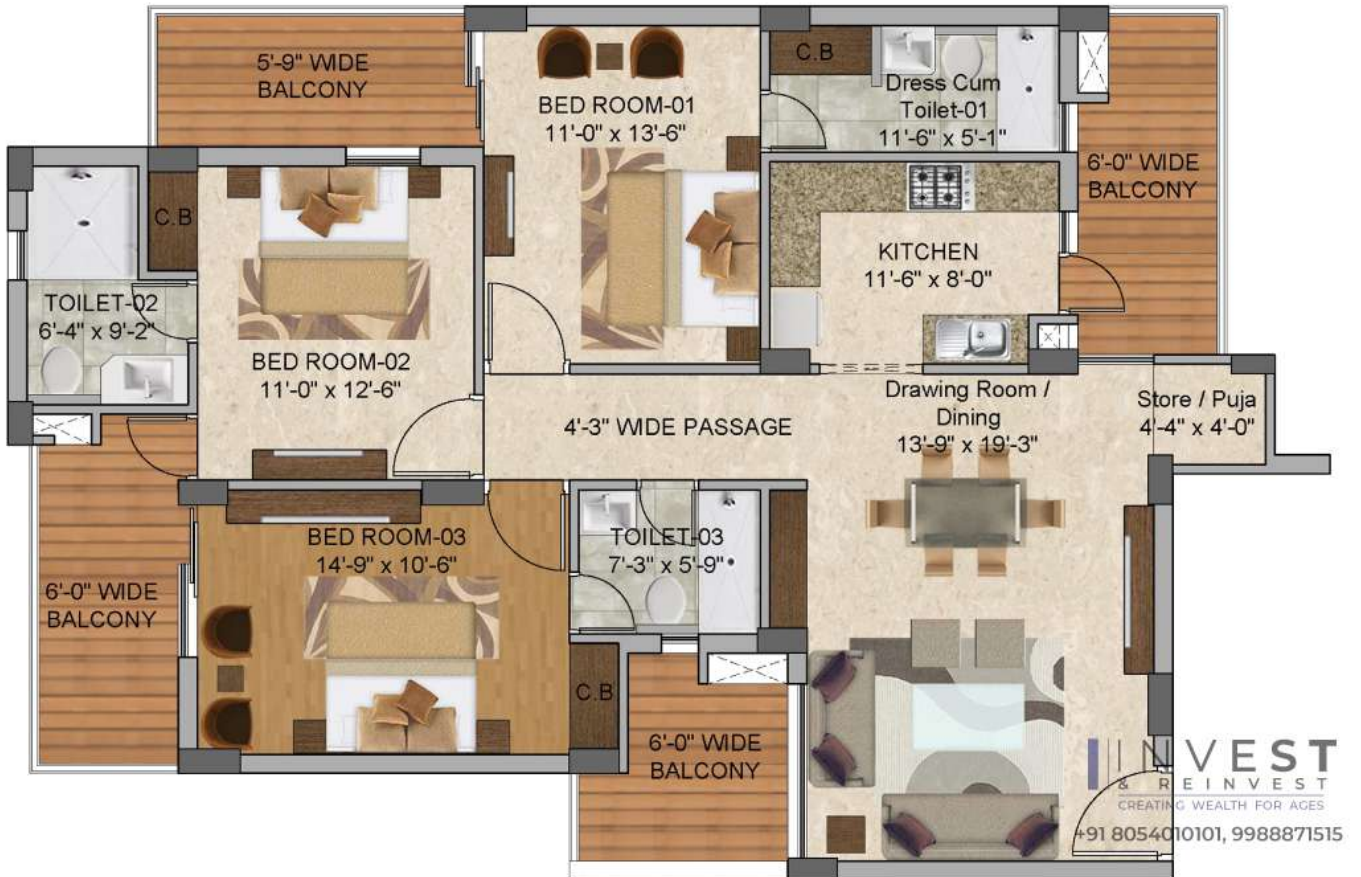
S+3



Carpet Area: 934.34 Sq.ft.
Wall Area: 60.84 Sq.ft.

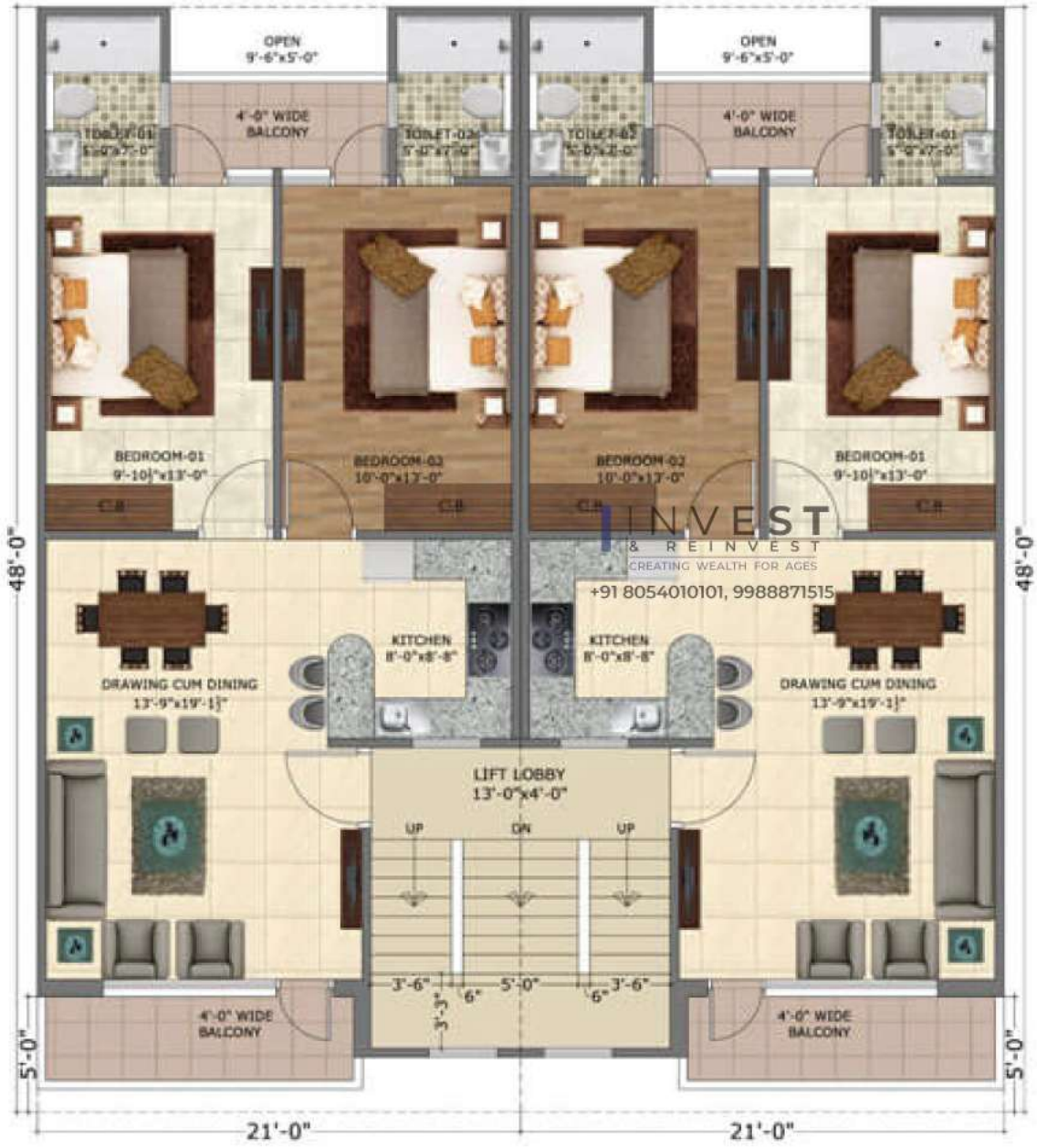
Balcony Area: 89.38 Sq.ft.
Circulation Area: 295.44 Sq.ft.
Total Area: 1380 Sq.ft.

TOWER NO. 3



UNIT PLAN

- ▶ Carpet area : 1086.53 Sq.Ft.
- ▶ Wall Area : 133.06 Sq.Ft.
- ▶ Balcony Area : 287.08 Sq.Ft.
- ▶ Circulation Area : 223.08 Sq.Ft.
- ▶ **Total Area : 1730 Sq.Ft.**





INVEST
 & REINVEST
 CREATING WEALTH FOR AGES

+91 8054010101, 9988871515